

2020-2021*

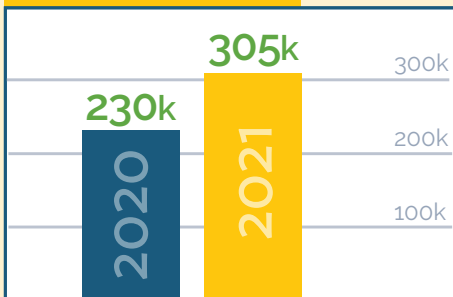
The need for Rogers Behavioral Health's services has risen tremendously since the pandemic began...

Screening requests

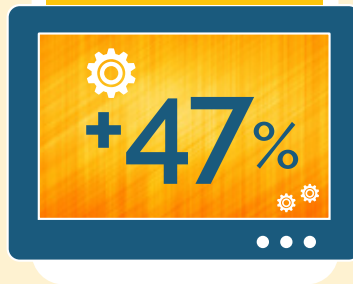
Online requests for phone screenings to determine treatment needs

	Adult	Teen	Child/adolescent
Depression & other mood disorders	+50%		+90%
Addiction	+16%	+13%	
Eating disorders	+108%		
OCD or other anxiety disorders	+31%		+44%
PTSD	+48%		

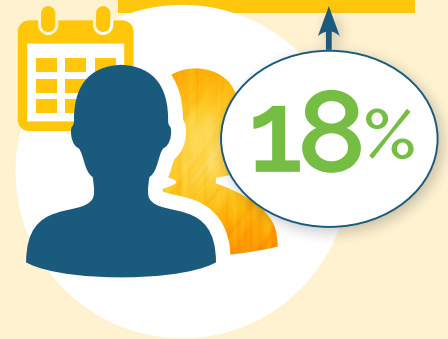
Call volume



Website visits



Patients served

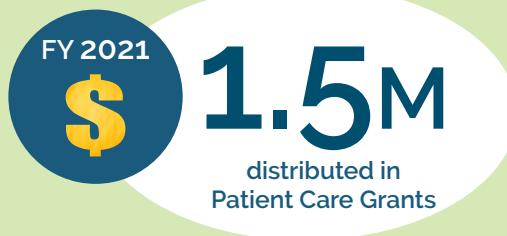


* Denotes dates within the fiscal years of 2020 and 2021.

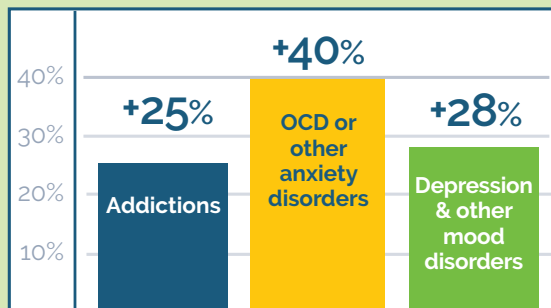
...which is why the Foundation's impact has never been greater!

Patient Care Grants

provide free treatment to those with limited resources and insurance coverage to complete their treatment process.



Increase in grant applications in three residential treatment programs.



distributed to patients who would have been unable to participate in telehealth services.

ROGERS
Behavioral Health
Foundation

Our work is far from over. Help us share the light with those in need!